

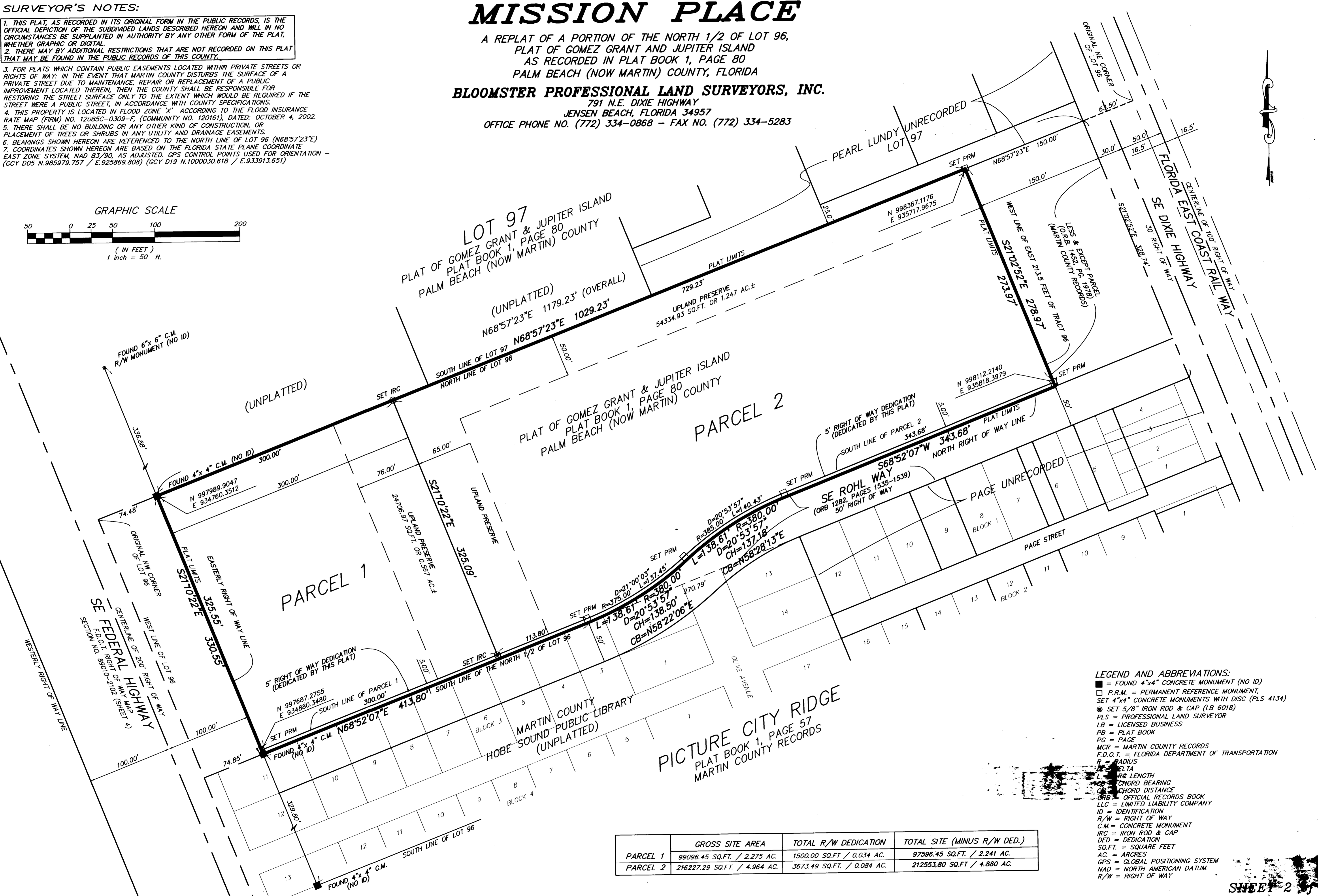
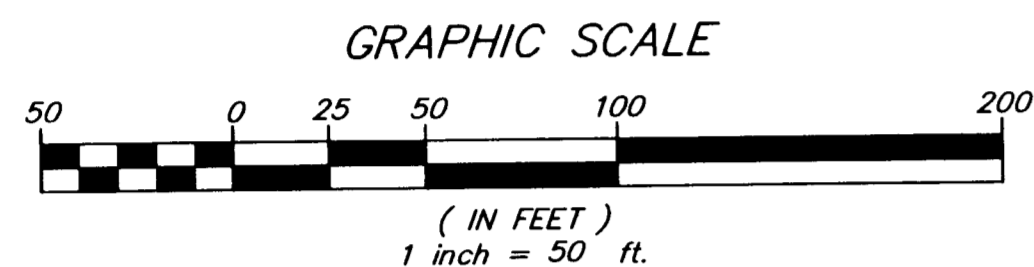
SURVEYOR'S NOTES:

1. THIS PLAT, AS RECORDED IN ITS ORIGINAL FORM IN THE PUBLIC RECORDS, IS THE OFFICIAL DEPICTION OF THE SUBDIVIDED LANDS DESCRIBED HEREON AND WILL IN NO CIRCUMSTANCES BE SUPPLANTED IN AUTHORITY BY ANY OTHER FORM OF THE PLAT, WHETHER GRAPHIC OR DIGITAL.
2. THERE MAY BE ADDITIONAL RESTRICTIONS THAT ARE NOT RECORDED ON THIS PLAT THAT MAY BE FOUND IN THE PUBLIC RECORDS OF THIS COUNTY.
3. FOR PLATS WHICH CONTAIN PUBLIC EASEMENTS LOCATED WITHIN PRIVATE STREETS OR RIGHTS OF WAY: IN THE EVENT THAT MARTIN COUNTY DISTURBS THE SURFACE OF A PRIVATE STREET DUE TO MAINTENANCE, REPAIR OR REPLACEMENT OF A PUBLIC IMPROVEMENT LOCATED THEREIN, THEN THE COUNTY SHALL BE RESPONSIBLE FOR RESTORING THE STREET SURFACE ONLY TO THE EXTENT WHICH WOULD BE REQUIRED IF THE STREET WERE A PUBLIC STREET, IN ACCORDANCE WITH COUNTY SPECIFICATIONS.
4. THIS PROPERTY IS LOCATED IN FLOOD ZONE 'X' ACCORDING TO THE FLOOD INSURANCE RATE MAP (FIRM) NO. 12085C-0309-F, (COMMUNITY NO. 120161), DATED: OCTOBER 4, 2002.
5. THERE SHALL BE NO BUILDING OR ANY OTHER KIND OF CONSTRUCTION, OR PLACEMENT OF TREES OR SHRUBS IN ANY UTILITY AND DRAINAGE EASEMENTS.
6. BEARINGS SHOWN HEREON ARE REFERENCED TO THE NORTH LINE OF LOT 96 (N68°57'23"E)
7. COORDINATES SHOWN HEREON ARE BASED ON THE FLORIDA STATE PLANE COORDINATE EAST ZONE SYSTEM, NAD 83/90, AS ADJUSTED. GPS CONTROL POINTS USED FOR ORIENTATION - (GCY D05 N.985979.757 / E.925869.808) (GCY D19 N.1000030.618 / E.933913.651)

MISSION PLACE

A REPLAT OF A PORTION OF THE NORTH 1/2 OF LOT 96,
 PLAT OF GOMEZ GRANT AND JUPITER ISLAND
 AS RECORDED IN PLAT BOOK 1, PAGE 80
 PALM BEACH (NOW MARTIN) COUNTY, FLORIDA

BLOOMSTER PROFESSIONAL LAND SURVEYORS, INC.
 791 N.E. DIXIE HIGHWAY
 JENSEN BEACH, FLORIDA 34957
 OFFICE PHONE NO. (772) 334-0868 - FAX NO. (772) 334-5283



PARCEL	GROSS SITE AREA	TOTAL R/W DEDICATION	TOTAL SITE (MINUS R/W DED.)
PARCEL 1	99096.45 SQ.FT. / 2.275 AC.	1500.00 SQ.FT. / 0.034 AC.	97596.45 SQ.FT. / 2.241 AC.
PARCEL 2	216227.29 SQ.FT. / 4.964 AC.	3673.49 SQ.FT. / 0.084 AC.	212553.80 SQ.FT. / 4.880 AC.

- LEGEND AND ABBREVIATIONS:**
- = FOUND 4"x4" CONCRETE MONUMENT (NO ID)
 - = P.R.M. = PERMANENT REFERENCE MONUMENT, SET 4"x4" CONCRETE MONUMENTS WITH DISC (PLS 4134)
 - ◎ SET 5/8" IRON ROD & CAP (LB 6018)
 - PLS = PROFESSIONAL LAND SURVEYOR
 - LB = LICENSED BUSINESS
 - PB = PLAT BOOK
 - PG = PAGE
 - MCR = MARTIN COUNTY RECORDS
 - F.D.O.T. = FLORIDA DEPARTMENT OF TRANSPORTATION
 - R = RADIUS
 - Δ = DELTA
 - L = LENGTH
 - CH = CHORD BEARING
 - CD = CHORD DISTANCE
 - ORB = OFFICIAL RECORDS BOOK
 - LLC = LIMITED LIABILITY COMPANY
 - ID = IDENTIFICATION
 - R/W = RIGHT OF WAY
 - C.M. = CONCRETE MONUMENT
 - IRC = IRON ROD & CAP
 - DED = DEDICATION
 - SQ.FT. = SQUARE FEET
 - AC. = ACRES
 - GPS = GLOBAL POSITIONING SYSTEM
 - NAD = NORTH AMERICAN DATUM
 - R/W = RIGHT OF WAY